

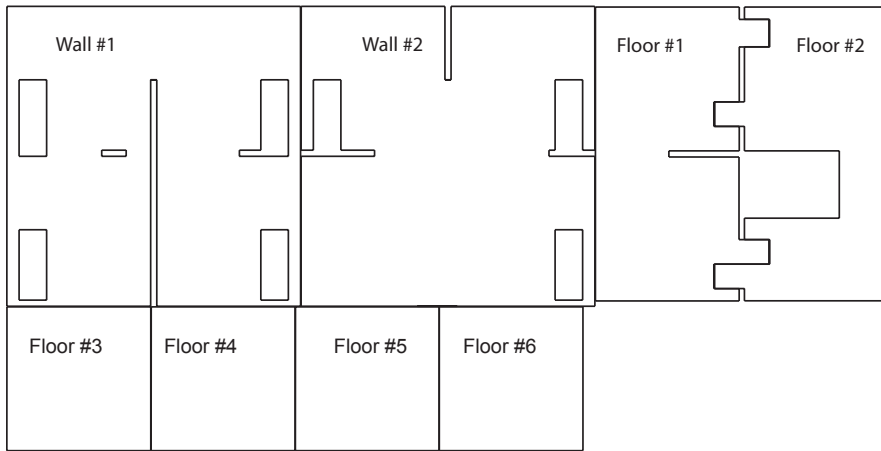
Building the House Structure

You have a few options for building the house structure:

- Make it yourself out of foam core by drawing the following pieces or by downloading a (free) full-sized pattern from www.makepopupcards.com and printing it on regular letter sized paper (8.5" x 11").
- Make it yourself out of any other 1/4" thick material such as MDF or plywood using the same pattern.
- Order ready-made, laser cut hardboard pieces to be shipped directly to you from www.makepopupcards.com

Step 1: draw the pieces on foam core

Draw the pattern on your 3' by 2' sheet of foam core by copying the measurements from the following drawings. If you printed the plans, place them carefully over your material (the walls are printed on 2 separate sheets and must be pasted together), then use a pin to mark each angle on the drawing. Remove the pattern and draw your shapes by connecting the dots.



Overall dimensions:

Walls:
10¹/₄" W by 10¹/₂" H

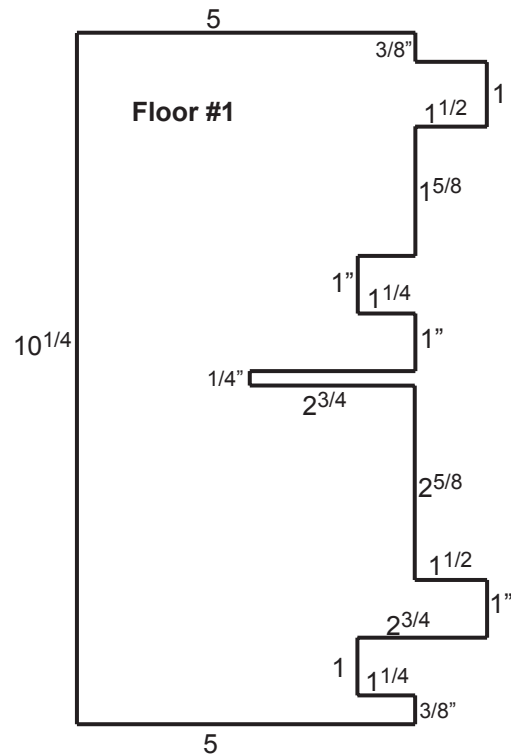
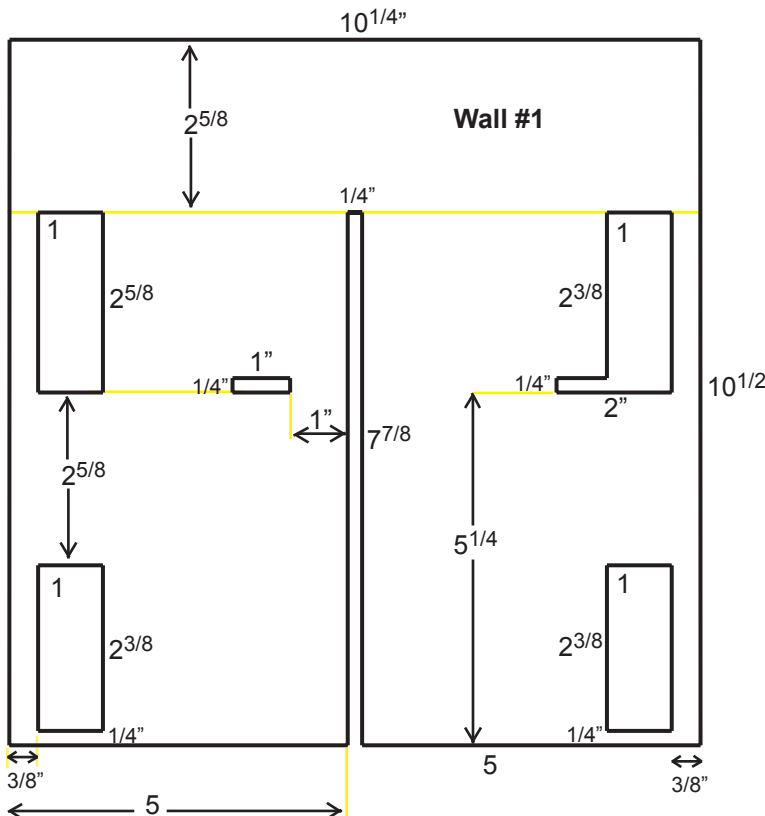
Floors #1 and 2 together:
10¹/₄" by 10¹/₄"

Floors #3-6
5" by 5"

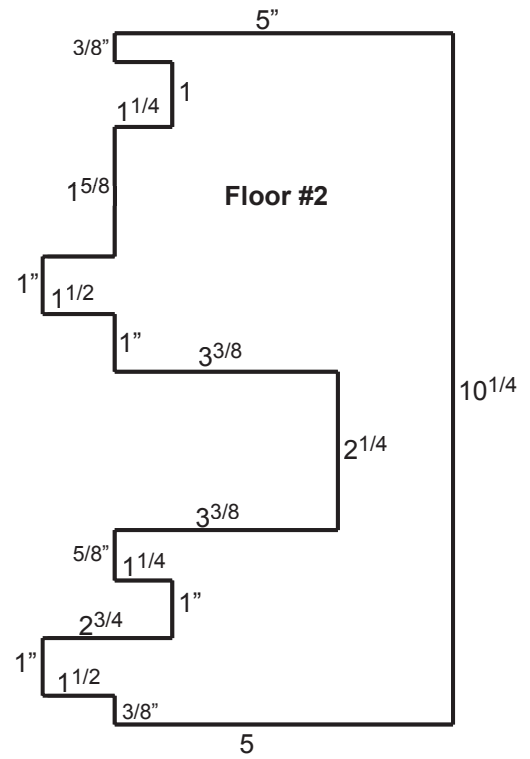
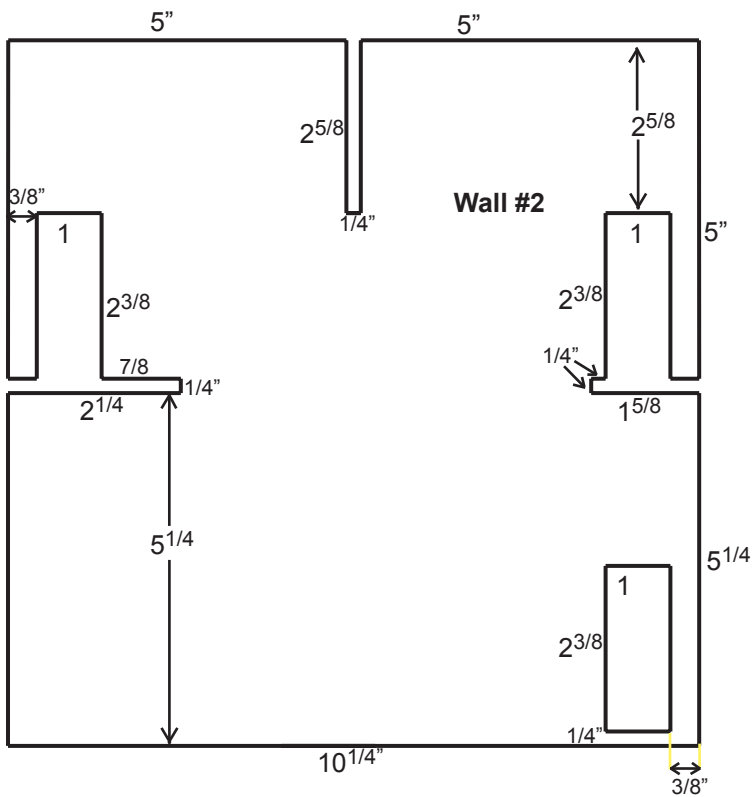
All door openings are 3/8" from the edge.

All slits are 1/4"

All angles are 90°



Drawings are not to scale



Step 2: Cut the pieces

Cut all eight pieces with a sharp scalpel knife

Step 3: Assemble the house

Start by slipping the two walls together at a 90° angle exactly as shown in the photographs. If by mistake you flip one of the walls, the upstairs hallway hole will be oriented incorrectly.

Floor #1 and #2 slide into the slits on wall #2 and their tabs push through the doors and slot of wall #1.

Step 4: Glue the rooms to the house structure

Before you glue anything, place all the rooms in the structure to make sure you assembled the four pieces correctly. For all the rooms, glue the flat wall first, then the matching pop-up card. For all the upstairs rooms, glue only the wall section of the pop-up to the house structure, NOT the floor or you will not be able to pull the house apart for flat storage.

Start with the upstairs hall, and glue it so the hole in the house structure matches the one on the card. Upstairs all the pop-up cards are glued to wall #1 and the flat walls are attached to wall #2. To the left of the upstairs hall is the master bedroom, and to the right is the kids' room. Between the two bedrooms is the bathroom.

Downstairs the flat walls are attached to foam core wall #1. The living room is to the left of the entrance hall, and the dining room must be to the right. The kitchen is in the back, accessible only through the dining room. Prepare the downstairs pop-ups by gluing a square foam core piece to each of the four floors, then, working on a flat surface, push the cards up against the house structure and glue the walls into place.

Step 5: Storage

To fold the house for storage, gently pull apart floor pieces #1 and #2, then carefully pull up wall #1

